



# Fisheye Network Camera SF8174/74V



5MP • 360° Surround View • IP66 •  
IK10 • Pixel Calculator • Panoramic PTZ

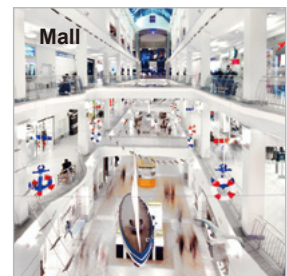
VIVOTEK SF8174/74V are the latest fisheye fixed dome network cameras featuring a detailed 5-Megapixel resolution sensor with superb image quality. Equipped with a fisheye lens for 360° surround view (ceiling/floor/table mount) without blind spots, the camera is able to provide coverage of wide, open areas, such as airports, shopping malls, parking lots, retail stores, offices and more.

As with all VIVOTEK true day/night cameras, the SF8174/74V feature removable IR-cut filters, maintaining clear images 24 hours a day. SF8174V's IP66-rated housing is designed to help the camera body withstand rain and dust and ensures operation under a multitude of harsh weather conditions; additionally, the vandal-proof IK10-rated housing effectively provides robust protection from physical damage. Together with 802.3af compliant PoE, MicroSD/SDHC/SDXC card slot for on-board storage and EN50155 (SF8174V only), the SF8174/74V are indisputably the top choice for constructing a robust surveillance system with the greatest coverage possible.

Moreover, SF8174/74V are compatible with the VIVOTEK Panoramic PTZ solution. Panoramic PTZ is a groundbreaking new technology developed by VIVOTEK for monitoring open areas with extreme detail. This feature is realized through the synergy of a VIVOTEK megapixel fisheye camera with a speed dome camera, and allows users to simultaneously monitor an area overview from a fisheye model while providing the capability for a detailed regional view from a speed dome. Suitable applications for Panoramic PTZ include department stores, station lobbies, airports, parking lots, and any wide open areas where comprehensive video surveillance systems and the capability for extreme video detail are essential.

## Features

- 5-Megapixel CMOS Sensor
- 30 fps @ 1080p Full HD
- 1.5 mm Fisheye Lens for 180° Panoramic View and 360° Surround View
- Panoramic PTZ Function with Speed Dome Camera for monitoring detailed regional view.
- Removable IR-cut Filter for Day & Night Function
- EN50155 Compliance for Professional Mobile Surveillance (SF8174V)
- Real-time H.264, MPEG-4, and MJPEG Compression (Triple Codec)
- WDR Enhancement for Unparalleled Visibility in Extremely Bright or Dark Environments
- Vandal-proof IK10-rated and Weather-proof IP66-rated Housing (SF8174V)
- ePTZ for Data Efficiency
- Built-in 802.3af Compliant PoE
- Built-in MicroSD/SDHC/SDXC Card Slot for On-board Storage
- Pixel Calculator for Image Clarity Measurement



**SUPREME**

## Technical Specifications

Model	SF8174/74V	<b>Alarm and Event</b>	
<b>System Information</b>		<b>Alarm Triggers</b>	Video motion detection, manual trigger, digital input, periodical trigger, system boot, recording notification, camera tampering detection
CPU	Multimedia SoC (System-on-Chip)	<b>Alarm Events</b>	Event notification using digital output, HTTP, SMTP, FTP and NAS server File upload via HTTP, SMTP, FTP and NAS server
Flash	128 MB	<b>General</b>	
RAM	128 MB	<b>Connectors</b>	RJ-45 cable connector for Network/PoE connection Audio input Audio output DC 12V power input Digital input*1 Digital output*1
<b>Camera Features</b>		<b>LED Indicator</b>	System power and status indicator
Image Sensor	1/2.5" Progressive CMOS in 2560 x 1920 resolution	<b>Power Input</b>	DC 12V IEEE 802.3af PoE Class 2
Maximum Resolution	1920x1920	<b>Power Consumption</b>	Max. 5.1 W (DC 12V) Max 5.3 W (PoE)
Lens Type	Fixed-focal	<b>Dimensions</b>	Ø: 145 mm x 47 mm (SF8174V) Ø: 139 mm x 34 mm (SF8174)
Focal Length	f = 1.5 mm	<b>Weight</b>	Net: 545 g (SF8174V) Net: 358 g (SF8174)
Aperture	F2.8	<b>Casing</b>	Vandal-proof IK10-rated metal housing (SF8174V) Weather-proof IP66-rated housing (SF8174V)
Field of View	180° (horizontal) 180° (vertical) 180° (diagonal)	<b>Safety Certifications</b>	CE, LVD, FCC Class A, VCCI, C-Tick, EN50155 (SF8174V), UL
Shutter Time	1/5 sec. to 1/32,000 sec.	<b>Operating Temperature</b>	Starting Temperature: -25°C ~ 50°C (-13°F ~ 122°F) Working Temperature: -40°C ~ 50°C (-40°F ~ 122°F)
WDR Technology	WDR Enhanced	<b>Warranty</b>	36 months
Day/Night	Removable IR-cut filter for day & night function	<b>System Requirements</b>	
Minimum Illumination	0.5 Lux @ F2.8, 30 IRE (Color) 0.001 Lux @ F2.8, 50 IRE (B/W)	<b>Operating System</b>	Microsoft Windows 7/Vista/XP/2000
Pan/tilt/zoom Functionalities	ePTZ: 12x digital zoom (12x on IE plug-in)	<b>Web Browser</b>	Mozilla Firefox 7~10 (streaming only) Internet Explorer 7/8/9/10
On-board Storage	MicroSD/SDHC/SDXC card slot	<b>Other Players</b>	VLC: 1.1.11 or above Quicktime: 7 or above
<b>Video</b>		<b>Included Accessories</b>	
Compression	H.264, MJPEG & MPEG-4	<b>CD</b>	User's manual, quick installation guide, Installation Wizard 2, VAST CMS (90-day free trial version)
Maximum Frame Rate	H.264: 15 fps at 1920x1920 30 fps at 1920x1080 MPEG-4: 15 fps at 1920x1920 30 fps at 1920x1080 MJPEG: 15 fps at 1920x1920 30 fps at 1920x1080	<b>Others</b>	Quick installation guide, warranty card, alignment sticker, desiccant bag, screw driver, screws pack, I/O cable (sold separately in US and Canada), mounting bracket, software CD
Maximum Streams	3 simultaneous streams	<b>Dimensions</b>	
S/N Ratio	Above 62 dB		
Dynamic Range	57 dB		
Video Streaming	Adjustable resolution, quality and bitrate		
Image Settings	Adjustable image size, quality and bit rate Pixel counter Time stamp, text overlay, flip & mirror Configurable brightness, contrast, saturation, sharpness, white balance, exposure control, gain, backlight compensation, privacy masks Scheduled profile settings		
<b>Audio</b>			
Audio Capability	Audio input/output (full duplex)		
Compression	AAC, G.711, G.726		
Interface	Built-in microphone External microphone input		
Effective Range	5 meters		
<b>Network</b>			
Users	Live viewing for up to 10 clients		
Protocols	IPv4, IPv6, TCP/IP, HTTP, HTTPS, UPnP, RTSP/RTP/RTCP, IGMP, SMTP, FTP, DHCP, NTP, DNS, DDNS, PPPoE, CoS, QoS, SNMP, 802.1X, UDP, ICMP		
Interface	10Base-T/100BaseTX Ethernet (RJ-45) *It is highly recommended to use standard Cat. 5e & Cat. 6 cables which are compliant with the 3P/ETL standard.		
ONVIF	Supported, specification available at www.onvif.org		
<b>Intelligent Video</b>			
Video Motion Detection	Five-window video motion detection		

## Compatible Accessories

### Ceiling Mount (P/N: 100113400G)



**AM-114**  
Pendant Head  
for Fisheye



**AM-51A**  
Dome Adaptor



**AM-114**  
Pendant Head  
for Speed Dome



**AM-212**  
Wall Mount Bracket



**AM-51A**  
Dome Adaptor



**AM-117**  
Pendant Pipe  
for Fisheye



**AM-517**  
Adaptor Ring



**AM-116**  
Pendant Pipe  
for Speed Dome



**AM-116**  
Pendant Pipe



**AM-517**  
Adaptor Ring

### Wall Mount (P/N: 100113300G)

All specifications are subject to change without notice. Copyright © VIVOTEK INC. All rights reserved.

Distributed by:



VIVOTEK INC.  
6F, No.192, Lien-Cheng Rd., Chung-Ho,  
New Taipei City, 235, Taiwan, R.O.C.  
T: +886-2-82455282 F: +886-2-82455532  
E: sales@vivotek.com

VIVOTEK USA  
2050 Ringwood Avenue,  
San Jose, CA 95131  
T: 408-773-8686 F: 408-773-8298  
E: salesusa@vivotek.com

VIVOTEK Europe  
Randstad 22-133, 1316BW Almere,  
The Netherlands  
T: +31(0)36-5298-434  
E: saleseurope@vivotek.com

Ver 1.8