



SD9364-EH



SD9364-EHL

Speed Dome Network Camera



1080p 60 fps · 30x Zoom · 250M/150M IR · NEMA 4X · IP66 · Defog · -50°C ~ 55°C · EIS · GbE Port

The SD9364-EH/EHL is the latest professional speed dome camera from VIVOTEK, specifically designed to enhance low light surveillance in large coverage areas. Equipped with 250M/150MIR illuminators and a 30x optical zoom lens, the SD9364-EH/EHL provides a superb low light image in the most challenging situations. The SD9364-EH/EHL also adopts VIVOTEK's latest IR technology, VAIR (Vari-Angle IR). VIVOTEK's VAIR provides smooth vari-angle adjustment of the IR illuminators, allowing broad coverage FOV and highly uniform IR intensity while avoiding hot-spots traditionally associated with IR illumination.

The SD9364-EH/EHL is the PTZ surveillance camera with IR Illumination to utilize H.265 compression technology. When combined with VIVOTEK's Smart Stream II technology, users can obtain bandwidth savings of up to 80%* compared to traditional H.264. By combining 1080p full HD resolution with H.265, IR illuminators, VAIR, WDR, and 30x optical zoom, the SD9364-EH/EHL is able to capture fine details at top-notch quality, 24 hours

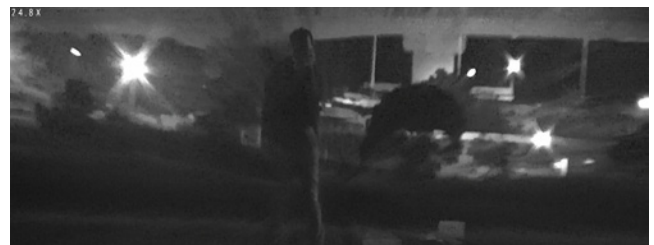
a day, 7 days a week. VIVOTEK further strengthened the camera performance with an IP66- and NEMA 4X-rated housing to protect the camera against rain, dust, and corrosion. The SD9364-EH/EHL has a wide operating temperature range from -50°C to 55°C, ensuring continuous operation under the most extreme weather conditions and hazardous environments. This makes the SD9364-EH/EHL ideally suited to monitor wide open spaces such as ports, highways, cities, and parking lots where high-level precision is required.

As with all VIVOTEK true day/night cameras, the SD9364-EH/EHL features a removable IR-cut filter, maintaining clear images 24 hours a day. Audio detection is included by recognizing changes in ambient noise. The SD9364-EH/EHL also includes a SD/SDHC/SDXC card slot and supports up to 60 fps in 1080P full HD. For the most demanding outdoor surveillance application, there is nothing that compares to the VIVOTEK's SD9364-EH/EHL.

* Depending on scene.

Key Features

- Real-time H.265, H.264 and MJPEG Compression (Triple Codec)
- 1080p HD CMOS Sensor
- 60 fps @ 1080p Full HD
- 30x Zoom Lens, up to 250M IR
- VAIR (Vari-Angle IR)
- Removable IR-cut Filter for Day & Night Function
- 360° Continuous Pan and 220° Tilt
- WDR Pro for Unparalleled Visibility in High Contrast Environments
- Weather-proof IP66, Vandal-proof IK10 and NEMA 4X-rated Housing
- -50°C ~ 55°C Wide Temperature Range for Extreme Weather Conditions
- Audio Detection for Instant Alerts
- Auto Tracking for Moving Objects
- Smart Stream II to Optimize Bandwidth Efficiency
- 3D Privacy Masks for Additional Protection
- Built-in SD/SDHC/SDXC Card Slot for On-board Storage
- Defog
- EIS



Without VAIR



With VAIR

Technical Specifications

| | |
|-------------------------------|--|
| Model | SD9364-EH: 30x, 250M IR SD9364-EHL: 30x, 150M IR |
| System Information | |
| CPU | Multimedia SoC (System-on-Chip) |
| Flash | 128MB |
| RAM | 512MB |
| Camera Features | |
| Image Sensor | SD9364-EH: 1/2.8" Progressive CMOS SD9364-EHL: 1/3" Progressive CMOS |
| Maximum Resolution | 1920x1080 |
| Lens Type | 30x Optical Zoom, Auto Focus |
| Focal Length | f = 4.3 ~ 129 mm (30x zoom) |
| Aperture | F1.6 ~ F4.7 |
| Auto-iris | DC-iris |
| Field of View | SD9364-EH: 2.3° ~ 64° (Horizontal) 1.3° ~ 36° (Vertical) 2.6° ~ 73° (Diagonal) SD9364-EHL: 2° ~ 59° (Horizontal) 2° ~ 45° (Vertical) 3° ~ 71° (Diagonal) |
| Shutter Time | SD9364-EH: 1 sec to 1/10,000 sec SD9364-EHL: 1/8 sec to 1/30,000 sec |
| WDR Technology | WDR Pro |
| Day/Night | Removable IR-cut filter for day & night function |
| Minimum Illumination | SD9364-EH: 0.07 Lux @ F1.6 (Color), 0 Lux @ F1.6 (B/W) SD9364-EHL: 0.42 Lux @ F1.6 (Color), 0.001 Lux @ F1.6 (B/W) |
| Pan Speed | 0.1° ~ 300° / sec |
| Pan Range | 360° endless |
| Tilt Speed | 0.1° ~ 300° / sec |
| Tilt Range | 220° (-110° ~ +110°) |
| Preset Locations | 256 preset locations 128 presets per tour |
| Pan/Tilt/Zoom Functionalities | SD9364-EH: 48x digital zoom (4x on IE plug-in, 12xbuilt-in), Auto pan mode, Auto patrol mode SD9364-EHL: 128x digital zoom (4x on IE plug-in, 32xbuilt-in), Auto pan mode, Auto patrol mode |
| IR Illuminators | SD9364-EH: 250 m SD9364-EHL: 150 m |
| On-board Storage | Slot type: SD/SDHC/SDXC card slot Seamless Recording |
| Video | |
| Compression | H265, H264, MJPEG |
| Maximum Frame Rate | H.265 & H.264: 60 fps @ 1920x1080 MJPEG: 30 fps @ 1920x1080 |
| Maximum Streams | 4 simultaneous streams |
| S/N Ratio | SD9364-EH: 62 dB SD9364-EHL: 54 dB |
| Dynamic Range | SD9364-EH: 120 dB SD9364-EHL: 110 dB |
| Video Streaming | Adjustable resolution, quality and bitrate Smart Stream II |
| Image Settings | Adjustable image size, quality and bit rate; Time stamp, text overlay, flip & mirror; Configurable brightness, contrast, saturation, sharpness, white balance, exposure control, gain, backlight compensation, privacy masks (Up to 24); Scheduled profile settings, Defog, 3DNR, EIS, HLC |
| Audio | |
| Audio Capability | Two-way audio (full duplex) |
| Compression | G.711, G.726 |
| Interface | External microphone input External line output |
| Network | |
| Users | Live viewing for up to 10 clients |

| | |
|-----------------------------|---|
| Protocols | IPv4, IPv6, TCP/IP, HTTP, HTTPS, UPnP, RTPSP/ RTP/RTCP, IGMP, SMTP, FTP, DHCP, NTP, DNS, DDNS, PPPoE, CoS, QoS, SNMP, 802.1X, UDP, ICMP, ARP, SSL, TLS, NTCIP |
| Interface | 10 Base-T/100 Base-TX/1000 Base-T Ethernet (RJ-45) *It is highly recommended to use standard CAT5e & CAT6 cables which are compliant with the 3P/ETL standard. |
| ONVIF | Supported, specification available at www.onvif.org |
| Intelligent Video | |
| Video Motion Detection | Five-window video motion detection |
| Auto-Tracking | Auto-tracking on moving object |
| Alarm and Event | |
| Alarm Triggers | Motion detection, manual trigger, digital input, periodical trigger, system boot, recording notification, audio detection |
| Alarm Events | Event notification using digital output, HTTP, SMTP, FTP, NAS server and SD card File upload via HTTP, SMTP, FTP, NAS server and SD card |
| General | |
| Connectors | RJ-45 cable connector for Network 10/100/1000Mbps PoE connection Audio input Audio output DC 48V power input Digital input*4 Digital output*2 RS-485 for PTZ control (PelcoD protocol, Baud rate 2400) |
| LED Indicator | System power and status indicator |
| Power Input | 95W PoH/PoE DC 48V |
| Power Consumption | Max. 81.8 W (Heater on) Max. 28.5 W (Heater off) |
| Dimensions | Ø 204 x 285 mm |
| Weight | Net: 6,030 g |
| Casing | IP66, IK10, NEMA 4X |
| Safety Certifications | CE, FCC Class A, VCCI, C-tick, NEMA 4X, UL |
| Operating Temperature | Starting Temperature: -40°C ~ 55°C (-40°F ~ 131°F) Working Temperature: -50°C ~ 55°C (-58°F ~ 131°F) |
| Humidity | 90% |
| Warranty | 36 months |
| System Requirements | |
| Operating System | Microsoft Windows 8/7/Vista/XP/2000 |
| Web Browser | Mozilla Firefox 7~43 (streaming only) Internet Explorer 7/8/9/10/11 |
| Other Players | VLC: 1.1.11 or above Quicktime: 7 or above |
| Included Accessories | |
| CD | User's manual, quick installation guide, Installation Wizard 2, VAST |
| Others | Wall mount bracket, screws, waterproof connectors, terminal blocks, quick installation guide, warranty card, alignment sticker, ground wire, T25 stardriver, software CD, desiccant bags, AO-003 I/O cable |
| Dimensions | |
| | |

Compatible Accessories

Mounting Kits



AM-529
Mounting Adapter

Others



AJ-001
USB Joystick



AJ-002
USB Joystick

Cabinet



AT-CAS-001
Cabinet for Speed dome, IP66, IK10



AT-CAB-002
Cabinet for HLG Power Supply



AT-SUN-002
Sunshield



AT-SWH-000
Power Safety Kit



PoE Kit/Power Adapter

48VDC



AW-IHS-0200/0201/0203
Industrial Fiber Media Converter



HLG-120H-48
Industrial 48VDC/120W Power Supply, IP67



HLG-120H-48
Industrial 48VDC/120W Power Supply, IP67

95W PoH/PoE



AW-IHH-0100
Industrial 1xGE 95W PoH/PoE Injector



HLG-120H-54
Industrial 54VDC/120W Power Supply, IP67



AW-IHH-0200
Industrial 1xGE 95W PoH/PoE + 1x SFP GE Switch



HLG-120H-54
Industrial 54VDC/120W Power Supply, IP67



AP-GIC-010A-095
95W PoH/PoE Injector