




N300 Wireless Gigabit VDSL/ADSL Modem Router

3 Antennas for Wider,
Stronger Coverage

TD-W9977



 VDSL/ADSL/Fiber/Cable
Compatible

 300Mbps
Wireless Speed

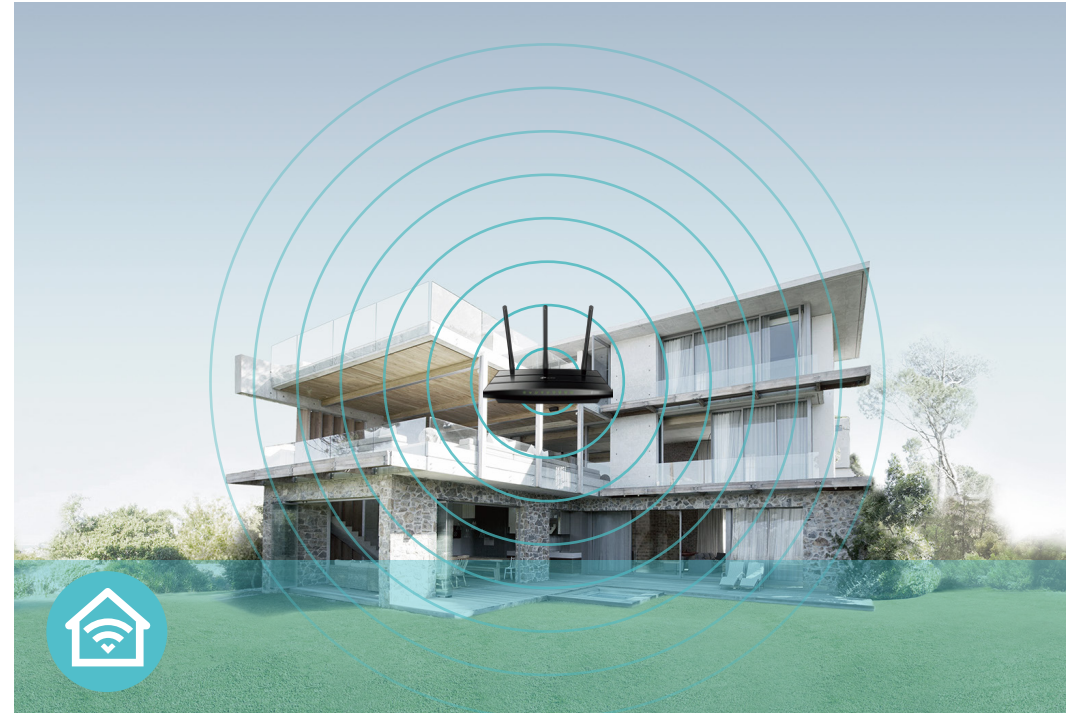
 Gigabit
Ports

Features



Speed

- **Ultimate Wireless Speed** – Up to 300Mbps makes it ideal for heavy bandwidth consuming or interruption sensitive applications like online gaming, internet calls and even the HD video streaming
- **High Speed VDSL** – VDSL Broadband Access of up to 100Mbps speeds ensures your home internet needs are met
- **Gigabit Ethernet Ports** – Gigabit Ethernet ports for rapid, reliable wired connections to computers, TVs and game consoles



Wi-Fi Range

- **Expansive Coverage** – 300Mbps Wi-Fi allows stable speed for wireless activities, such as streaming, surfing, browsing and posting social media
- **High-gain Antennas** – Three 5dBi high-gain antennas expand network coverage across your home



Reliability

- **Easy Bandwidth Management** – IP-based Bandwidth Control makes it easier for you to manage the bandwidth of connected devices

Features



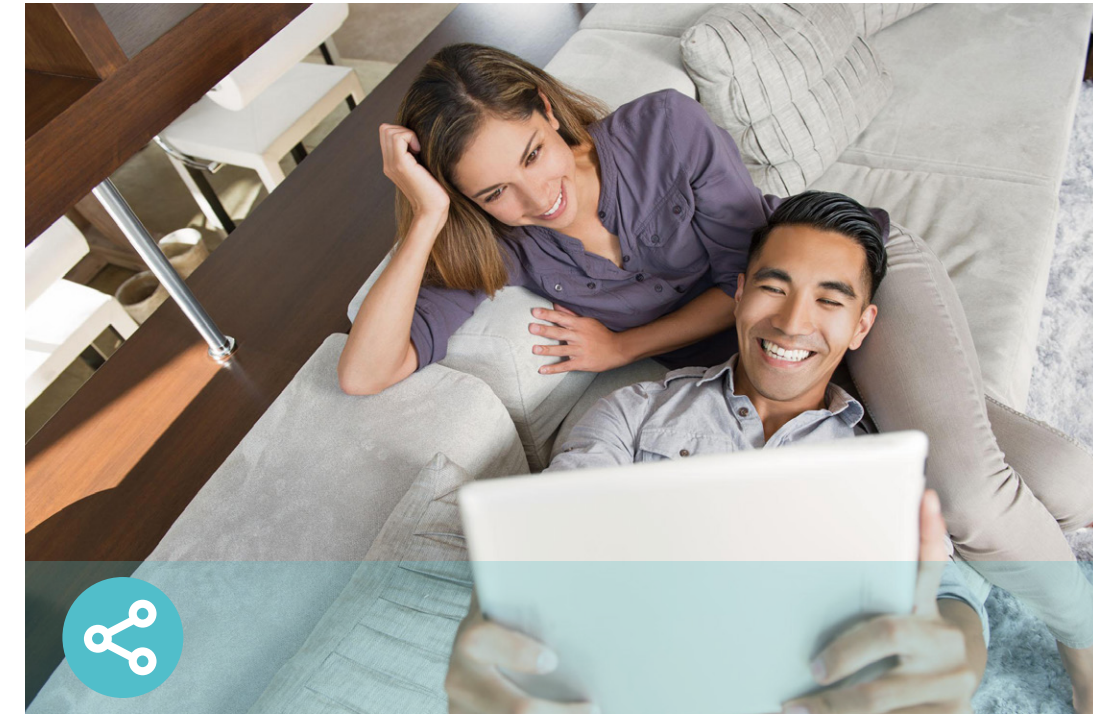
Ease of Use

- **Wireless Schedule** – Wireless Schedule lets you turn the Wi-Fi radio on or off based on a preset timetable
- **Fast Encryption** – Easily set up an encrypted wireless connection at a push of the WPS button
- **Easy Wi-Fi On/Off** – Turn On/Off wireless radio using the Wi-Fi button
- **Power On/Off** – Conveniently power on or off your router as required



Security

- **Guest Network** – Keep your main network secure by creating a separate network for friends and visitors
- **Parental Controls** – Manage when and how connected devices can access the internet
- **Encryptions for Secure Network** – WPA-PSK/WPA2-PSK encryptions provide active protection against security threats
- **VPN Support** – Secure access to your home or office network from remote devices
- **6KV Lightning Protection** – Shield against electrical damage caused by thunderstorms



Easy Management

- **Intuitive Web UI** – Ensures quick and simple installation without hassle
- **Hassle-free Management with Tether App** – Network management is made easy with the TP-Link Tether App, available on any Android or iOS device

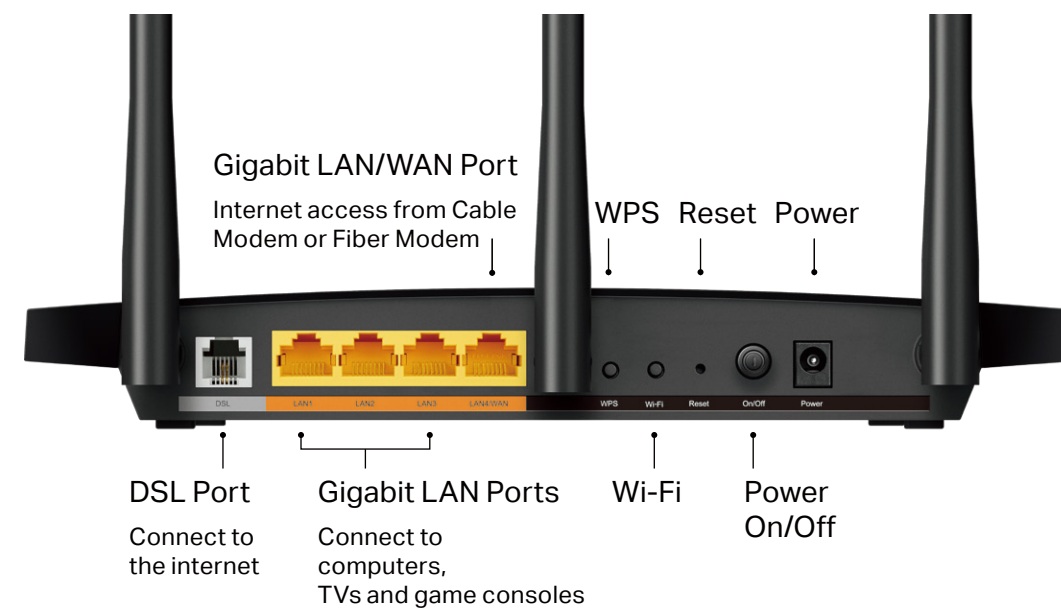
Specifications

Hardware

- Ports: 3 10/100/1000Mbps RJ45 LAN Ports, 1 10/100/1000Mbps RJ45 WAN/LAN Port, 1 RJ11 Port
- Button: WPS Button, Reset Button, Wi-Fi Button, Power On/Off Button
- Antenna: 3 × 5dBi Fixed Omni-Directional Antennas
- External Power Supply: 12V/1A
- Dimensions (W x D x H): 9.6 × 6.6 × 1.3 in. (243.5 × 167.5 × 32.7 mm)
- IEEE Standards: IEEE 802.3, 802.3u
- ADSL Standards: Full-rate ANSI T1.413 Issue 2, ITU-T G.992.1(G.DMT), ITU-T G.994.1 (G.hs), ITU-T G.995.1
- ADSL2 Standards: ITU-T G.992.3 (G.DMT.bis)
- ADSL2+ Standards: ITU-T G.992.5
- VDSL2 Standards: ITU-T G.993.2, ITU-T G.993.5 (G.vector), ITU-T G.998.4 (G.INP)

Wireless

- Wireless Standards: IEEE 802.11b, 802.11g, 802.11n
- Frequency: 2.4 - 2.5GHz
- Signal Rate: 300Mbps at 2.4GHz
- Transmit Power: <20dBm(EIRP)
- Wireless Function: Enable/Disable Wireless Radio, WDS Bridge, WMM, Wireless Statistics
- Wireless Security: Supports 64/128-bit WEP, WPA/WPA2, WPA-PSK/WPA2-PSK encryptions, Wireless MAC Filtering



Specifications

Software

- Operation Modes: DSL Modem Router, Wireless Router
- DHCP: Server, Client, DHCP Client List, Address Reservation, DHCP Relay
- Quality of Service: WMM, Bandwidth Control (IP QoS)
- Port Forwarding: Virtual Server, Port Triggering, UPnP, DMZ, Manage Control
- Dynamic DNS: DynDns, NO-IP
- VPN Pass-Through: IPSec Pass-through
- ATM/PPP Protocols: ATM Forum UNI3.1/4.0, PPP over ATM (RFC 2364), PPP over Ethernet (RFC2516), IPoA (RFC1577/2225), PVC - Up to 8 PVCs
- Security: NAT Firewall, SPI Firewall, MAC / IP / URL Filtering
- Management: Remote management, Telnet management, Command Line Interface, SSL for TR-069, SNMP V1/V2C, Web Based Firmware Upgrade, CWMP (TR-069), Diagnostic Tools
- Guest Network: 2.4GHz guest network
- IPSec VPN: Supports up to 10 IPSec VPN tunnels
- Protocols: Supports IPv4 and IPv6

Others

- Certification: CE, RoHS, RCM
- System Requirements:
Windows 10/8.1/8/7/Vista/XP or Mac OS or Linux-based operating system
- Environment
Operating Temperature: 0°C~40°C (32°F ~104°F)
Storage Temperature: -40°C~70°C (-40°F ~158°F)
Operating Humidity: 10%~90% non-condensing
Storage Humidity: 5%~90% non-condensing
- Package Contents
DSL Modem Router TD-W9977
External Splitter
RJ11 DSL Cable
RJ45 Ethernet Cable
Quick Installation Guide
Power Adapter



For more information, please visit

<http://www.tp-link.com/en/products/details/TD-W9977.html>

or scan the QR code left

Specifications are subject to change without notice. TP-Link is a registered trademark of TP-Link Technologies Co., Ltd. Other brands and product names are trademarks or registered trademarks of their respective holders. Copyright ©2016 TP-Link Technologies Co., Ltd. All rights reserved.

www.tp-link.com

TP-Link N300 Wireless Gigabit VDSL/ADSL Modem Router TD-W9977