

Huawei S1700 Series Switches Product Brochure



S1700 Series Switches

Product Overview

The S1700 series enterprise switches (S1700) are next-generation energy-saving Ethernet access switches. The S1700 uses high-performance hardware, which offers a wide array of features to help customers build secure, reliable, high-performance networks. The S1700 is easy to install and maintain, and is ideal for small-sized and medium-sized enterprises, Internet cafes, hotels, and schools.

The S1700 consists of unmanaged switches, web-managed switches, and web/SNMP-based switches:

- Unmanaged switches:

Include the S1700-16G, S1700-24-AC, S1700-24GR, S1724G-AC, S1700-52R-2T2P-AC

- Web-managed switches:

Include the S1720-10GW-2P, S1720-10GW-PWR-2P, S1720-28GWR-4P, S1720-28GWR-4X, S1720-28GWR-PWR-4P, S1720-28GWR-PWR-4TP, S1720-28GWR-PWR-4X, S1720-52GWR-4P, S1720-52GWR-4X, S1720-52GWR-PWR-4P, S1720-52GWR-PWR-4X, S1720X-16XWR, S1720X-32XWR.

- Web/SNMP-based switches:

Include the S1720-20GFR-4TP, S1700-28FR-2T2P-AC, S1700-28GFR-4P-AC, S1720-28GFR-4TP, S1700-52FR-2T2P-AC, S1700-52GFR-4P-AC, S1720-10GW-2P-E, S1720-10GW-PWR-2P-E, S1720-28GWR-4P-E, S1720-28GWR-4X-E, S1720-28GWR-PWR-4P-E, S1720-28GWR-PWR-4TP-E, S1720-28GWR-PWR-4X-E, S1720-52GWR-4P-E, S1720-52GWR-4X-E, S1720-52GWR-PWR-4P-E, S1720-52GWR-PWR-4X-E, S1720X-16XWR-E, S1720X-32XWR-E

Product Appearance

Unmanaged switches

S1700-16G



- 16 Ethernet 10/100/1000 ports
- AC power supply
- Forwarding performance: 24Mpps
- Switching Capacity: 32Gbps

S1700-24-AC



- 24 Ethernet 10/100 ports
- AC power supply
- Forwarding performance: 3.6Mpps
- Switching Capacity: 4.8Gbps

S1700-24GR



- 24 Ethernet 10/100/1000 ports
- AC power supply
- Forwarding performance: 36Mpps
- Switching Capacity: 48Gbps

S1724G-AC



- 24 Ethernet 10/100/1000 ports
- AC power supply
- Forwarding performance: 36Mpps
- Switching Capacity: 48Gbps

S1700-52R-2T2P-AC



- 48 Ethernet 10/100 ports, 2 Ethernet 10/100/1000 ports, 2 Gig SFP ports
- AC power supply
- Forwarding performance: 13.2Mpps
- Switching Capacity: 17.6Gbps

Web-managed switches:

S1720-10GW-2P



- 8 Ethernet 10/100/1000 ports, 2 Gig SFP ports
- AC power supply
- Forwarding performance: 15Mpps
- Switching Capacity: 68Gbps

S1720-10GW-PWR-2P



- 8 Ethernet 10/100/1000 ports, 2 Gig SFP ports
- PoE+
- AC power supply
- Forwarding performance: 15Mpps
- Switching Capacity: 68Gbps

S1720-28GWR-4P



- 24 Ethernet 10/100/1000 ports, 4 Gig SFP ports
- AC power supply
- Forwarding performance: 42Mpps
- Switching Capacity: 68Gbps

S1720-28GWR-4X



- 24 Ethernet 10/100/1000 ports, 4 10 Gig SFP+
- AC power supply
- Forwarding performance: 96Mpps
- Switching Capacity: 168Gbps

S1720-28GWR-PWR-4P



- 24 Ethernet 10/100/1000 ports, 4 Gig SFP ports
- PoE+
- AC power supply
- Forwarding performance: 42Mpps
- Switching Capacity: 68Gbps

S1720-28GWR-PWR-4TP



- 24 Ethernet 10/100/1000 ports, 2 Gig SFP and 2 dual-purpose 10/100/1000 or SFP
- PoE+
- AC power supply
- Forwarding performance: 42Mpps
- Switching Capacity: 68Gbps

S1720-28GWR-PWR-4X



- 24 Ethernet 10/100/1000 ports, 4 10 Gig SFP+
- supportPoE+
- AC power supply
- Forwarding performance: 96Mpps
- Switching Capacity: 168Gbps

S1720-52GWR-4P



- 48 Ethernet 10/100/1000 ports, 4 Gig SFP ports
- AC power supply
- Forwarding performance: 78Mpps
- Switching Capacity: 336Gbps

S1720-52GWR-4X



- 48 Ethernet 10/100/1000 ports, 4 10 Gig SFP+
- AC power supply
- Forwarding performance: 132Mpps
- Switching Capacity: 336Gbps

S1720-52GWR-PWR-4P



- 48 Ethernet 10/100/1000 ports, 4 Gig SFP ports
- PoE+
- AC power supply
- Forwarding performance: 78Mpps
- Switching Capacity: 336Gbps

S1720-52GWR-PWR-4X



- 48 Ethernet 10/100/1000 ports, 4 10 Gig SFP+
- PoE+
- AC power supply
- Forwarding performance: 132Mpps
- Switching Capacity: 336Gbps

S1720X-16XWR



- 16 10 Gig SFP+
- AC power supply
- Forwarding performance: 240Mpps
- Switching Capacity: 680Gbps

S1720X-32XWR



- 32 10 Gig SFP+
- AC power supply
- Forwarding performance: 252Mpps
- Switching Capacity: 680Gbps

Web/SNMP-based switches

S1700-28FR-2T2P-AC



- 24 Ethernet 10/100 ports, 2 Ethernet 10/100/1000 ports, 2 Gig SFP ports;
- AC power supply
- Forwarding performance: 9.6Mpps
- Switching Capacity: 12.8Gbps

S1700-52FR-2T2P-AC



- 48 Ethernet 10/100 ports, 2 Ethernet 10/100/1000 ports, 2 Gig SFP ports;
- AC power supply
- Forwarding performance: 13.2Mpps
- Switching Capacity: 17.6Gbps

S1700-28GFR-4P-AC



- 24 Ethernet 10/100/1000 ports, 4 Gig SFP ports;
- AC power supply
- Forwarding performance: 42Mpps
- Switching Capacity: 56Gbps

S1700-28GFR-4P-AC



- 48 Ethernet 10/100/1000 ports, 4 Gig SFP ports;
- AC power supply
- Forwarding performance: 78Mpps
- Switching Capacity: 104Gbps

S1720-20GFR-4TP



- 16 Ethernet 10/100/1000 ports, 2 Gig SFP and 2 dual-purpose 10/100/1000 or SFP
- AC power supply
- Forwarding performance: 30Mpps
- Switching Capacity: 128Gbps

S1720-28GFR-4TP



- 24 Ethernet 10/100/1000 ports, 4 Gig SFP ports, 2 of which are dual-purpose 10/100/1000 Base-t or SFP ports;
- AC power supply
- Forwarding performance: 42Mpps
- Switching Capacity: 128Gbps

S1720-10GW-2P-E



- 8 Ethernet 10/100/1000 ports, 2 Gig SFP ports
- AC power supply
- Forwarding performance: 15Mpps
- Switching Capacity: 68Gbps

S1720-10GW-PWR-2P-E



- 8 Ethernet 10/100/1000 ports, 2 Gig SFP ports
- PoE+
- AC power supply
- Forwarding performance: 15Mpps
- Switching Capacity: 68Gbps

S1720-28GWR-4P-E



- 24 Ethernet 10/100/1000 ports, 4 Gig SFP ports
- AC power supply
- Forwarding performance: 42Mpps
- Switching Capacity: 68Gbps

S1720-28GWR-4X-E



- 24 Ethernet 10/100/1000 ports, 4 10 Gig SFP+
- AC power supply
- Forwarding performance: 96Mpps
- Switching Capacity: 168Gbps

S1720-28GWR-PWR-4P-E



- 24 Ethernet 10/100/1000 ports, 4 Gig SFP ports
- PoE+
- AC power supply
- Forwarding performance: 42Mpps
- Switching Capacity: 68Gbps

S1720-28GWR-PWR-4TP-E



- 24 Ethernet 10/100/1000 ports, 4 Gig SFP ports, 2 of which are dual-purpose 10/100/1000 Base-t or SFP ports
- PoE+
- AC power supply
- Forwarding performance: 42Mpps
- Switching Capacity: 68Gbps

S1720-28GWR-PWR-4X-E



- 24 Ethernet 10/100/1000 ports, 4 10 Gig SFP+
- supportPoE+
- AC power supply
- Forwarding performance: 96Mpps
- Switching Capacity: 168Gbps

S1720-52GWR-4P-E



- 48 Ethernet 10/100/1000 ports, 4 Gig SFP ports
- AC power supply
- Forwarding performance: 78Mpps
- Switching Capacity: 336Gbps

S1720-52GWR-4X-E



- 48 Ethernet 10/100/1000 ports, 4 10 Gig SFP+
- AC power supply
- Forwarding performance: 132Mpps
- Switching Capacity: 336Gbps

S1720-52GWR-PWR-4P-E



- 48 Ethernet 10/100/1000 ports, 4 Gig SFP ports
- PoE+
- AC power supply
- Forwarding performance: 78Mpps
- Switching Capacity: 336Gbps

S1720-52GWR-PWR-4X-E



- 48 Ethernet 10/100/1000 ports, 4 10 Gig SFP+
- PoE+
- AC power supply
- Forwarding performance: 132Mpps
- Switching Capacity: 336Gbps

S1720X-16XWR-E



- 16 10 Gig SFP+
- AC power supply
- Forwarding performance: 240Mpps
- Switching Capacity: 680Gbps

S1720X-32XWR-E



- 32 10 Gig SFP+
- AC power supply
- Forwarding performance: 252Mpps
- Switching Capacity: 680Gbps

Product Features

Innovative energy-saving design

- The S1700 supports Energy Efficient Ethernet (EEE), which enables the switch to enter a power-saving mode when traffic is light.
- The S1700 can adjust the power output for transmissions based on the cable length. It can also set any ports that are not transmitting traffic to sleep mode.
- The models that use a fan-free design reduce power consumption and noise.

Non-blocking and high-speed forwarding

- All S1700 ports provide Layer 2 wire-speed forwarding capabilities to ensure non-blocking packet forwarding. S1700 models provide optical and electrical GE uplink ports, which facilitate user access and are cost-effective.
- The S1700/S1720/S1720-E MAC address table supports up to 8K/16K/16K of MAC addresses, making it easy to expand networks and deploy new services. The S1700 support layer 3 static routing-forwarding which include IPv4 and IPv6 protocols. The S1720-E support RIP,RIPng,OSPF.

Convenient management and maintenance

- The S1700 is easy to manage and maintain, being equipped with a one-key operation button on the front panel.
- Web-managed S1700 models come with a web network management system, making it easy to configure switches.
- Web/SNMP-based S1700 models allow for the use of an SNMP-based NMS for centralized configuration and management.
- Web-managed S1720 models come with a web network management system, making it easy to configure switches.
- Web/SNMP-based S1720/S1720-E models can support CLI configuration.

Powerful security performance

- The S1700 provides a range of security features, including 802.1x, RADIUS, Portal and NAC. The S1700 also supports packet filtering based on MAC addresses or ports in order to defend against hackers and virus attacks.

Great networking and bandwidth extensibility

- The S1700 provides LACP, STP, RSTP, and MSTP functions to implement link aggregation and backup. S1720 switches support up to 64 MSTP instances for flexible networking.

Product Specifications

Unmanaged switches

Item	S1700-16G	S1700-24-AC	S1700-24GR	S1724G	S1700-52R-2T2P-AC
Downlink port	16 Ethernet 10 /100/ 1000 ports	24 Ethernet 10/ 100 ports	24 Ethernet 10 /100/ 1000 ports	24 Ethernet 10/ 100/ 1000 ports	48 Ethernet 10/ 100 ports
Uplink port	Shared with downlink ports	Shared with downlink ports	Shared with downlink ports	Shared with downlink ports	2 Ethernet 10/100/1000 ports, 2 Gig SFP
MAC ADDRESS TABLE	8K MAC	8K MAC	8K MAC	8K MAC	8K MAC
Dimensions mm (W*D *H))	320 × 208 × 43.6	320 × 208 × 43.6	442 × 220 × 43.6	320 × 208 × 43.6	442 × 220 × 43.6
Input voltage	Rated AC power: 100V-240V AC, 50~60Hz				
	Max AC voltage: 90-264V AC, 47~63Hz				
EEE	NA				
Power Consumption	<10W	<3.9W	<14.2W	<14.2W	<22.6W
Operating temperature	0°C ~ 45°C	0°C ~ 45°C	0°C ~ 45°C	0°C ~ 45°C	0°C ~ 45°C
Humidity (non-condensing)	5%-95%	5% ~ 95%	5%-95%	5% ~ 95%	10% ~ 90%
Heat dissipation	Fan-free natural heat dissipation				

Web-managed switches

Item	S1720-10GW-2P	S1720-28GWR-4P	S1720-28GWR-4X	S1720-28GWR-PWR-4TP
	S1720-10GW-PWR-2P	S1720-28GWR-PWR-4P	S1720-28GWR-PWR-4X	
Downlink port	8 Ethernet 10/100/1000 ports	24 Ethernet 10/100/1000 ports	24 Ethernet 10/100/1000 ports	24 Ethernet 10/100/1000 ports
Uplink port	2 Gig SFP	4 Gig SFP	4 10 Gig SFP+	4 Gig SFP, 2 dual-purpose 10/ 100/ 1000 or SFP
MAC ADDRESS TABLE	16K MAC	16K MAC	16K MAC	16K MAC
Routing Feature	supportIPv4、IPv6 static routing	supportIPv4、IPv6 static routing	supportIPv4、IPv6 static routing	supportIPv4、IPv6 static routing
Dimensions mm (W*D *H))	250 × 180 × 43.6 320 × 220 × 43.6(PoE)	442 × 220 × 43.6 442 × 310 × 43.6(PoE)	442 × 220 × 43.6 442 × 310 × 43.6(PoE)	442 × 220 × 43.6

Item	S1720-10GW-2P	S1720-28GWR-4P	S1720-28GWR-4X	S1720-28GWR-PWR-4TP
	S1720-10GW-PWR-2P	S1720-28GWR-PWR-4P	S1720-28GWR-PWR-4X	
Input voltage	100V-240V AC, 50~60Hz	100V-240V AC, 50~60Hz	100V-240V AC, 50~60Hz	100V-240V AC, 50~60Hz
EEE	support	support	support	support
Power Consumption	S1720-10GW-2P: 11.86W S1720-10GW-PWR-2P: without PD : 14.63W; with PD: 159.2W (PoE:123.2W)	S1720-28GWR-4P: 20.2W S1720-28GWR-PWR-4P: without PD: 40.4W; with PD:446.7W (PoE: 369.6W)	S1720-28GWR-4X: 27.9W S1720-28GWR-PWR-4X: without PD: 42.7W; with PD:448.5W (PoE: 369.6W)	without PD: 24.4W; with PD:165.528W (PoE:123.2W)
Operating temperature	0℃ ~ 45℃	0℃ ~ 45℃	0℃ ~ 45℃	0℃ ~ 45℃
Humidity (non-condensing)	5%~95%	5%~95%	5%~95%	5%~95%
Heat dissipation	Fan-free natural heat dissipation	Non-PoE: Fan-free natural heat dissipation PoE: Heat dissipation using fans supporting intelligent speed adjustment	None-PoE: Fan-free natural heat dissipation PoE: Heat dissipation using fans supporting intelligent speed adjustment	Fan-free natural heat dissipation

Item	S1720-52GWR-4P	S1720-52GWR-4X	S1720X-16XWR	S1720X-32XWR
	S1720-52GWR-PWR-4P	S1720-52GWR-PWR-4X		
Downlink port	48 Ethernet 10/100/1000 ports	48 Ethernet 10/100/1000 ports	16 10 Gig SFP+	32 10 Gig SFP+
Uplink port	4 Gig SFP	4 10 Gig SFP+		
MAC Address Table	16K MAC	16K MAC	32K MAC	32K MAC
Routing Feature	supportIPv4、IPv6 static routing	supportIPv4、IPv6 static routing	supportIPv4、IPv6 static routing	supportIPv4、IPv6 static routing
Dimensions mm (W*D*H))	442 × 220 × 43.6 442 × 310 × 43.6(PoE)	442 × 220 × 43.6 442 × 310 × 43.6(PoE)	420*220*43.6	442 × 220 × 43.6
Input voltage	100V-240V AC, 50~60Hz			
EEE	support	support	support	support

Item	S1720-52GWR-4P	S1720-52GWR-4X	S1720X-16XWR	S1720X-32XWR
	S1720-52GWR-PWR-4P	S1720-52GWR-PWR-4X		
Power Consumption	S1720-52GWR-4P: 47.3W S1720-52GWR-PWR-4P: without PD:61.7W; with PD:461.8W(PoE: 369.6W)	S1720-52GWR-4X: 50.3W S1720-52GWR-PWR-4X: without PD:63.5W; with PD:464.3W(PoE: 369.6W)	63.1W	103.6W
Operating temperature	0°C ~ 45°C	0°C ~ 45°C	0°C ~ 45°C	0°C ~ 45°C
Humidity (non-condensing)	5%~95%	5%~95%	5%~95%	5%~95%
Heat dissipation	Heat dissipation using fans supporting intelligent speed adjustment	Heat dissipation using fans supporting intelligent speed adjustment	Heat dissipation using fans supporting intelligent speed adjustment	Heat dissipation using fans supporting intelligent speed adjustment

Web/SNMP-based switches

Item	S1700-28FR-2T2P-AC	S1700-52FR-2T2P-AC	S1700-28GFR-4P-AC	S1700-52GFR-4P-AC	S1720-20GFR-4TP	S1720-28GFR-4TP
Downlink port	24 Ethernet 10/100 ports;	48 Ethernet 10/100 ports;	24 Ethernet 10/100/1000 ports;	48 Ethernet 10/100/1000 ports;	16 Ethernet 10/100/1000 ports	24 Ethernet 10/100/1000 ports
Uplink port	2 Ethernet 10/100/1000 ports, 2 Gig SFP;		4 Gig SFP	4 Gig SFP	4 Gig SFP, 2 dual-purpose 10/100/1000 or SFP	
MAC ADDRESS TABLE	8K MAC				16K MAC	
Routing Feature	NA				support IPv4, IPv6 static routing	
Dimensions mm (W*D*H))	442 × 220 × 43.6				442 × 220 × 43.6	
Input voltage	100V-240V AC, 50~60Hz				100V-240V AC, 50~60Hz	
EEE	NA		support		support	
Power Consumption	<25W	<35W	<30W	<55W	<20.7W	<24.3W
Operating temperature	0°C ~ 45°C				0°C ~ 45°C	

Item	S1700-28FR-2T2P-AC	S1700-52FR-2T2P-AC	S1700-28GFR-4P-AC	S1700-52GFR-4P-AC	S1720-20GFR-4TP	S1720-28GFR-4TP
Humidity (non-condensing)	10% ~ 90%				5%-95%	
Heat dissipation	Fan-free natural heat dissipation			Heat dissipation using fans supporting intelligent speed adjustment	Fan-free natural heat dissipation	

Item	S1720-10GW-2P-E	S1720-28GWR-4P-E	S1720-28GWR-4X-E	S1720-28GWR-PWR-4TP-E
	S1720-10GW-PWR-2P-E	S1720-28GWR-PWR-4P-E	S1720-28GWR-PWR-4X-E	
Downlink port	8 Ethernet 10/100/1000 ports	24 Ethernet 10/100/1000 ports	24 Ethernet 10/100/1000 ports	24 Ethernet 10/100/1000 ports
Uplink port	2 Gig SFP	4 Gig SFP	4 10 Gig SFP+	4 Gig SFP, 2 dual-purpose 10/100/1000 or SFP
MAC ADDRESS TABLE	16K MAC	16K MAC	16K MAC	16K MAC
Routing Feature	supportIPv4、IPv6 static routing	supportIPv4、IPv6 static routing	supportIPv4、IPv6 static routing	supportIPv4、IPv6 static routing
Dimensions mm (W*D *H))	250 × 180 × 43.6 320 × 220 × 43.6(PoE)	442 × 220 × 43.6 442 × 310 × 43.6(PoE)	442 × 220 × 43.6 442 × 310 × 43.6(PoE)	442 × 220 × 43.6
Input voltage	100V-240V AC, 50~60Hz	100V-240V AC, 50~60Hz	100V-240V AC, 50~60Hz	100V-240V AC, 50~60Hz
EEE	support	support	support	support
Power Consumption	S1720-10GW-2P-E: 11.86W S1720-10GW-PWR-2P-E: without PD :14.63W; with PD: 159.2W(PoE:123.2W)	S1720-28GWR-4P-E: 20.2W S1720-28GWR-PWR-4P-E: without PD:40.4W; with PD:446.7W(PoE: 369.6W)	S1720-28GWR-4X-E: 27.9W S1720-28GWR-PWR-4X-E: without PD:42.7W; with PD:448.5W(PoE: 369.6W)	without PD:24.4W; with PD: 165.528W(PoE: 123.2W)
Operating temperature	0℃ ~ 45℃	0℃ ~ 45℃	0℃ ~ 45℃	0℃ ~ 45℃
Humidity (non-condensing)	5%~95%	5%~95%	5%~95%	5%~95%

Item	S1720-10GW-2P-E	S1720-28GWR-4P-E	S1720-28GWR-4X-E	S1720-28GWR-PWR-4TP-E
	S1720-10GW-PWR-2P-E	S1720-28GWR-PWR-4P-E	S1720-28GWR-PWR-4X-E	
Heat dissipation	Fan-free natural heat dissipation	Non-PoE: Fan-free natural heat dissipation PoE: Heat dissipation using fans supporting intelligent speed adjustment	None-PoE: Fan-free natural heat dissipation PoE: Heat dissipation using fans supporting intelligent speed adjustment	Fan-free natural heat dissipation

Item	S1720-52GWR-4P-E	S1720-52GWR-4XE-	S1720X-16XWR-E	S1720X-32XWR-E
	S1720-52GWR-PWR-4P-E	S1720-52GWR-PWR-4XE-		
Downlink port	48 Ethernet 10/100/1000 ports	48 Ethernet 10/100/1000 ports	16 10 Gig SFP+	32 10 Gig SFP+
Uplink port	4 Gig SFP	4 10 Gig SFP+		
MAC ADDRESS TABLE	16K MAC	16K MAC	32K MAC	32K MAC
Routing Feature	supportIPv4、IPv6 static routing	supportIPv4、IPv6 static routing	supportIPv4、IPv6 static routing	supportIPv4、IPv6 static routing
Dimensions mm (W*D*H))	442 × 220 × 43.6 442 × 310 × 43.6(PoE)	442 × 220 × 43.6 442 × 310 × 43.6(PoE)	420*220*43.6	420*220*43.6
Input voltage	100V-240V AC, 50~60Hz			
EEE	support	support	support	support
Power Consumption	S1720-52GWR-4P-E: 47.3W S1720-52GWR-PWR-4P-E: without PD:61.7W; with PD: 461.8W(PoE:369.6W)	S1720-52GWR-4X-E: 50.3W S1720-52GWR-PWR-4X-E: without PD:63.5W; with PD: 464.3W(PoE: 369.6W)	63.1W	103.6W
Operating temperature	0℃ ~ 45℃	0℃ ~ 45℃	0℃ ~ 45℃	0℃ ~ 45℃
Humidity (non-condensing)	5%~95%	5%~95%	5%~95%	5%~95%
Heat dissipation	Heat dissipation using fans supporting intelligent speed adjustment	Heat dissipation using fans supporting intelligent speed adjustment	Heat dissipation using fans supporting intelligent speed adjustment	Heat dissipation using fans supporting intelligent speed adjustment

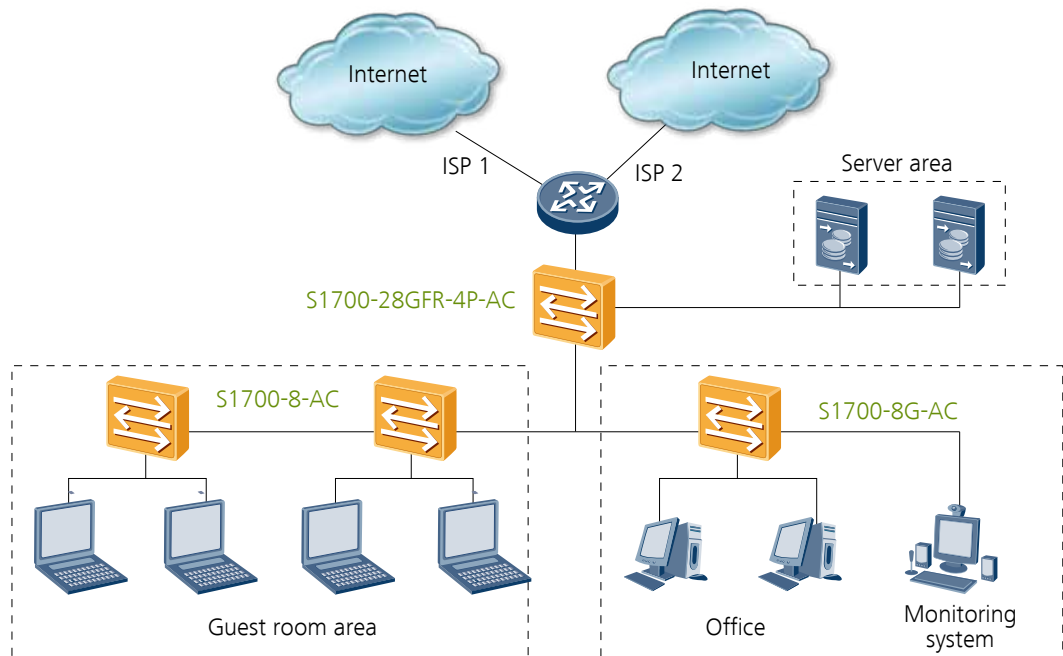
Service Features

Item	Web-managed Switch	Web/SNMP-based Switch
Security features	<ul style="list-style-type: none"> Packet filtering based on MAC addresses MAC address authentication (S1720 Series) Port-based 802.1x authentication RADIUS authentication Portal authentication (S1720 Series) Port isolation Storm suppression (S1720 Series) DHCP snooping (S1720 Series) 	<ul style="list-style-type: none"> Hardware ACL Packet filtering based on MAC addresses MAC address authentication Port-based 802.1x authentication. RADIUS authentication Portal authentication Port isolation Storm suppression Attack defense, which prevents broadcast traffic, ARP attacks, ICMP attacks, TCP attacks, worm viruses, and DoS attacks DHCP snooping
VLANs	<ul style="list-style-type: none"> 256 VLANs (S1720 Series : 4K) Access port Trunk port Hybrid port Management VLAN Voice VLAN 	<ul style="list-style-type: none"> 4 K VLANs Access port Trunk port Hybrid port Management VLAN Voice VLAN
QoS	<ul style="list-style-type: none"> PQ and WRR Four queues on each port (S1720 series: Eight) Queue scheduling based on 802.1p or DSCP priorities 	<ul style="list-style-type: none"> PQ and WRR Eight queues on each port Queue scheduling based on 802.1p or DSCP priorities
STP	<ul style="list-style-type: none"> STP(IEEE 802.1d) RSTP(IEEE 802.1w) MSTP(IEEE 802.1s) (S1720 series) 	<ul style="list-style-type: none"> STP(IEEE 802.1d) RSTP(IEEE 802.1w) MSTP(IEEE 802.1s)
Multicast	<ul style="list-style-type: none"> IGMP snooping 	<ul style="list-style-type: none"> IGMP snooping
Routing feature	<ul style="list-style-type: none"> IPv4 and IPv6 static routing (S1720 series) 	<ul style="list-style-type: none"> IPv4 and IPv6 static routing RIP,RIPng,OSPF (S1720-E series)
Link aggregation	<ul style="list-style-type: none"> 12 link aggregation groups (LAGs) with a maximum of eight ports in each LAG 64 link aggregation groups(S1720 series) Static LACP 	<ul style="list-style-type: none"> 12 link aggregation groups (LAGs) with a maximum of eight ports in each LAG 64 link aggregation groups(S1720 series) 120 link aggregation groups(S1720-E series) Static LACP
Port mirroring	<ul style="list-style-type: none"> Port-based bidirectional flow mirroring 	<ul style="list-style-type: none"> Port-based bidirectional flow mirroring Configuring a trunk as a mirrored interface
Bandwidth control	<ul style="list-style-type: none"> Rate limiting for incoming and outgoing packets, with a granularity of 64 kbps 	<ul style="list-style-type: none"> Rate limiting for incoming and outgoing packets, with a granularity of 8 kbps

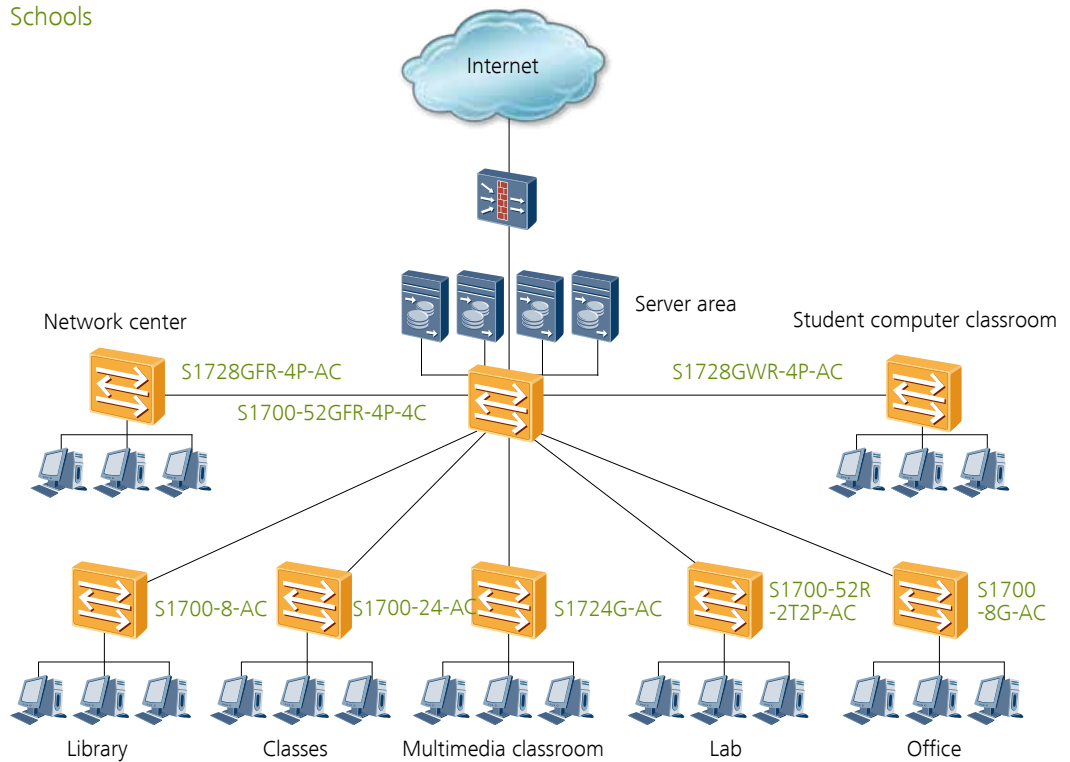
Item	Web-managed Switch	Web/SNMP-based Switch
Broadcast storm suppression	Broadcast storm suppression based on the interface rate Alarm sending when the traffic rate reaches the upper limit	Broadcast storm suppression based on the interface rate Alarm sending when the traffic rate reaches the upper limit
Device management	Web system network management DHCP client One-key restoration Note:You can upgrade the web-managed S1720 model to the web/SNMP-managed model by purchasing a license	SNMP Web system network management (HTTPS) DHCP client User password protection One-key restoration CLI configuration (S1720GFR,S1720GW-E,S1720GWR-E,S1720X-XWR-E series)
Device maintenance	System log Ping Virtual Cable Test (VCT) Link Layer Discovery Protocol (LLDP)	Remote Network Monitoring (RMON) System log Ping and traceroute Virtual Cable Test (VCT) Link Layer Discovery Protocol (LLDP)

Applications

Hotels



Schools



Product List

S1700 switch models

Item	Product Description
1	S1700-16G (16 Ethernet 10/100/1000 ports, AC 110/220V)
2	S1700-24-AC (24 Ethernet 10/100 ports, AC 110/220V)
3	S1724G (24 Ethernet 10/100/1000 ports, AC 110/220V)
4	S1700-24GR (24 Ethernet 10/100/1000 ports, AC 110/220V)
5	S1700-52R-2T2P-AC (48 Ethernet 10/100 ports, 2 Ethernet 10/100/1000 ports and 2 Gig SFP, AC 110/220V)
6	S1720-10GW-2P (8 Ethernet 10/100/1000 ports, 2 Gig SFP, AC 110/220V)
7	S1720-10GW-PWR-2P (8 Ethernet 10/100/1000 PoE+ ports, 2 Gig SFP, AC 110/220V)
8	S1720-28GWR-4P (24 Ethernet 10/100/1000 ports, 4 Gig SFP, AC 110/220V)
9	S1720-28GWR-4X (24 Ethernet 10/100/1000 ports, 4 10 Gig SFP+, AC 110/220V)
10	S1720-28GWR-PWR-4P (24 Ethernet 10/100/1000 PoE+ ports, 4 Gig SFP, 370W POE AC 110/220V)
11	S1720-28GWR-PWR-4X (24 Ethernet 10/100/1000 PoE+ ports, 4 10 Gig SFP+, 370W POE AC 110/220V)
12	S1720-52GWR-4P (48 Ethernet 10/100/1000 ports, 4 Gig SFP, AC 110/220V)
13	S1720-52GWR-4X (48 Ethernet 10/100/1000 ports, 4 10 Gig SFP+, AC 110/220V)

Item	Product Description
14	S1720-52GWR-PWR-4P(48 Ethernet 10/100/1000 PoE+ ports,4 Gig SFP,370W POE AC 110/220V)
15	S1720-52GWR-PWR-4X(48 Ethernet 10/100/1000 PoE+ ports,4 10 Gig SFP+,370W POE AC 110/220V)
16	S1720-28GWR-PWR-4TP(24 Ethernet 10/100/1000,2 Gig SFP and 2 dual-purpose 10/100/1000 or SFP,8 ports PoE+,124W POE AC)
17	S1720X-16XWR(16 10Gig SFP+, AC110/220V)
18	S1720X-32XWR(32 10Gig SFP+, AC110/220V)
19	S1700-28FR-2T2P-AC (24 Ethernet 10/100 ports, 2 Ethernet 10/100/1000 ports and 2 Gig SFP,AC 110/220V)
20	S1700-28GFR-4P-AC (24 Ethernet 10/100 ports, 4 Gig SFP, AC 110/220V)
21	S1700-52FR-2T2P-AC (48 Ethernet 10/100 ports, 2 Ethernet 10/100/1000 ports and 2 Gig SFP,AC 110/220V)
22	S1700-52GFR-4P-AC (48 Ethernet 10/100/1000 ports, 4 Gig SFP, AC 110/220V)
23	S1720-20GFR-4TP (16 Ethernet 10/100/1000 ports, 2 Gig SFP ports, 2 of which are dual-purpose 10/100/1000 Base-t or SFP ports, AC 110/220V)
24	S1720-28GFR-4TP (24 Ethernet 10/100/1000 ports, 2 Gig SFP ports, 2 of which are dual-purpose 10/100/1000 Base-t or SFP ports, AC 110/220V)
25	S1720-10GW-2P-E(8 Ethernet 10/100/1000 ports,2 Gig SFP,with license,AC 110/220V)
26	S1720-10GW-PWR-2P-E(8 Ethernet 10/100/1000 PoE+ ports,2 Gig SFP,with license,AC 110/220V)
27	S1720-28GWR-4P-E(24 Ethernet 10/100/1000 ports,4 Gig SFP, with license,AC 110/220V)
28	S1720-28GWR-4X-E(24 Ethernet 10/100/1000 ports,4 10 Gig SFP+, with license,AC 110/220V)
29	S1720-28GWR-PWR-4P-E(24 Ethernet 10/100/1000 ports,4 Gig SFP,PoE+, with license,370W POE AC 110/220V)
30	S1720-28GWR-PWR-4X-E(24 Ethernet 10/100/1000 ports,4 10 Gig SFP+, PoE+,with license,370W POE AC 110/220V)
31	S1720-52GWR-4P-E(48 Ethernet 10/100/1000 ports,4 Gig SFP, with license,AC 110/220V)
32	S1720-52GWR-4X-E(48 Ethernet 10/100/1000 ports,4 10 Gig SFP+, with license,AC 110/220V)
33	S1720-52GWR-PWR-4P-E(48 Ethernet 10/100/1000 ports,4 Gig SFP,PoE+, with license,370W POE AC 110/220V)
34	S1720-52GWR-PWR-4X-E(48 Ethernet 10/100/1000 ports,4 10 Gig SFP+, PoE+,with license,370W POE AC 110/220V)
35	S1720-28GWR-PWR-4TP-E(24 Ethernet 10/100/1000,2 Gig SFP and 2 dual-purpose 10/100/1000 or SFP, 8 ports PoE+,with license,124W POE AC,front access)
36	S1720X-16XWR-E(16 10Gig SFP+,with license,AC110/220V)
37	S1720X-32XWR-E(32 10Gig SFP+,with license,AC110/220V)

For more information, visit <http://e.huawei.com>, or contact your local Huawei sales office.

Copyright © Huawei Technologies Co., Ltd. 2017. All rights reserved.

No part of this document may be reproduced or transmitted in any form or by any means without prior written consent of Huawei Technologies Co., Ltd.

Trademark Notice



, HUAWEI, and  are trademarks or registered trademarks of Huawei Technologies Co., Ltd.

Other trademarks, product, service and company names mentioned are the property of their respective owners.

General Disclaimer

The information in this document may contain predictive statements including, without limitation, statements regarding the future financial and operating results, future product portfolio, new technology, etc. There are a number of factors that could cause actual results and developments to differ materially from those expressed or implied in the predictive statements. Therefore, such information is provided for reference purpose only and constitutes neither an offer nor an acceptance. Huawei may change the information at any time without notice.

HUAWEI TECHNOLOGIES CO.,LTD.
Huawei Industrial Base
Bantian Longgang
Shenzhen 518129,P.R.China
Tel: +86 755 28780808

www.huawei.com