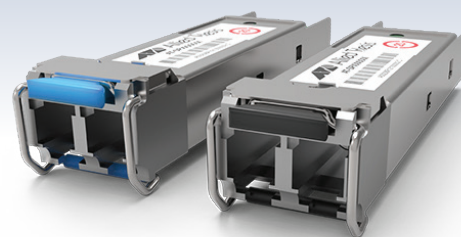


# SP 100Mbps Series

## Small Form-Factor Pluggable Modules

The Allied Telesis 100Mbps SP Series offers the latest industry standard in flexible, full-duplex, Fast Ethernet connectivity. These hot-swappable interfaces simply plug into the SFP slot on all SFP-compatible products. Configuration can be optimized to meet a wide variety of distance and service requirements.



### Options

Allied Telesis SP 100Mbps Series Small Form-Factor Pluggables (SFPs) offers short-haul, long-haul, Bi-Directional (BiDi), and Copper solutions. This flexibility allows network managers to easily extend network distance and bandwidth.

Using an SFP BiDi transceiver can upgrade transmission capacity on a typical network—without installing new fibers—by utilizing a single fiber for both the send and receive signals.

### Compatibility

SP 100Mbps Series SFPs are Multi-Sourcing Agreement (MSA)-compliant, and fully adhere to industry standard networking regulations. This allows the SP 100Mbps Series to be used with other MSA-compliant platforms that support SFP uplink connections.

For Cisco compatibility please refer to the “SFP Compatibility Flyer”

### Standard Data Rates Supported

Fast Ethernet

### Environmental Specifications

Operating Temperature: 0°C to 70°C (32°F to 158°F)  
 Operating humidity: 0% to 85%, non-condensing  
 Storage Temperature: -40°C to 85°C (-40°F to 185°F)  
 Storage humidity: 0% to 80%, non-condensing

### Ordering Information

#### AT-SPFX/2

2 km, 100FX (LC), 1310 nm

#### AT-SPFX/2-90

2 km, 100FX (LC), 1310 nm, TAA compliant

#### AT-SPFX/15

15 km, 100FX (LC), 1310 nm

#### AT-SPTX/100Mbps-00

100 m, 10/100TX, RJ45

#### AT-SPFXBD-LC-13

15 km, 100FX, BiDi SFP (1310 Tx/1550 Rx)

#### AT-SPFXBD-LC-15

15 km, 100FX, BiDi SFP (1550 Rx/1310 Tx)

## Key Features

- ▶ Compact size
- ▶ Flexible architecture
- ▶ Plug and play for ease of use
- ▶ Self-locking mechanism
- ▶ MSA compliant
- ▶ Two year warranty\*

\*Warranties may be region-specific. For local warranty periods, please visit [alliedtelesis.com/support](http://alliedtelesis.com/support), or contact your local sales office.

## Specifications

| PRODUCT         | FIBER TYPE | CONNECTOR TYPE | MAXIMUM DISTANCE | WAVELENGTH TX/RX (nm) | DDM* | TRANSMIT (dBm) |     | RECEIVE SENSITIVITY (dBm) | POWER BUDGET (dBm) | OVER-LOAD (dBm) | OPERATING TEMPERATURE       |
|-----------------|------------|----------------|------------------|-----------------------|------|----------------|-----|---------------------------|--------------------|-----------------|-----------------------------|
|                 |            |                |                  |                       |      | MIN            | MAX |                           |                    |                 |                             |
| SPTX/100Mbps-00 | 10/100TX   | RJ45           | 100 m            | -                     | -    | -              | -   | -                         | -                  | -               | 0°C to 70°C (32°F to 158°F) |
| SPFX/2          | MMF        | LC             | 2 km             | 1310                  | -    | -20            | -14 | -31                       | 11                 | 0               | 0°C to 70°C (32°F to 158°F) |
| SPFX/2-90       | MMF        | LC             | 2 km             | 1310                  | -    | -20            | -14 | -31                       | 11                 | 0               | 0°C to 70°C (32°F to 158°F) |
| SPFX/15         | SMF        | LC             | 15 km            | 1310                  | -    | -15            | -8  | -31                       | 16                 | -8              | 0°C to 70°C (32°F to 158°F) |
| SPFXBD-LC-13    | SMF        | LC             | 15 km            | 1310/1550             | -    | -14            | -8  | -31                       | 17                 | -3              | 0°C to 70°C (32°F to 158°F) |
| SPFXBD-LC-15    | SMF        | LC             | 15 km            | 1550/1310             | -    | -14            | -8  | -31                       | 17                 | -3              | 0°C to 70°C (32°F to 158°F) |

MMF = Multi Mode Fiber, SMF = Single Mode Fiber

\*Digital Diagnostics Monitoring