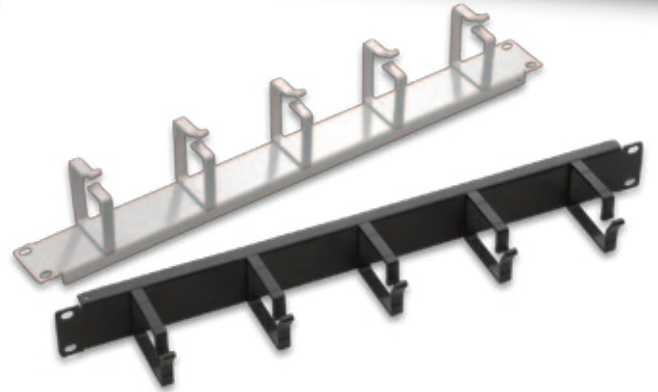
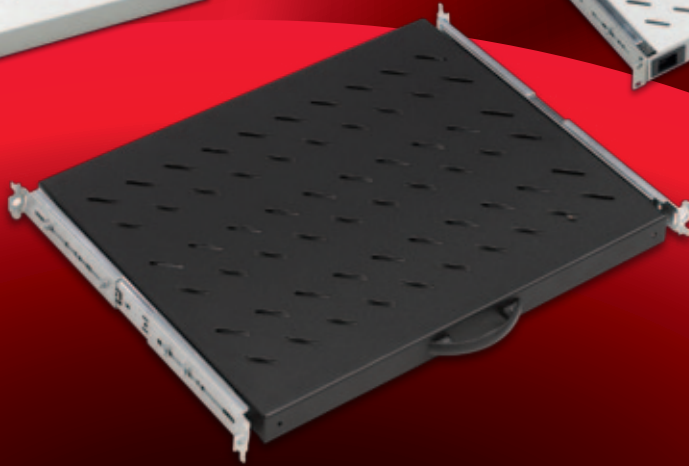
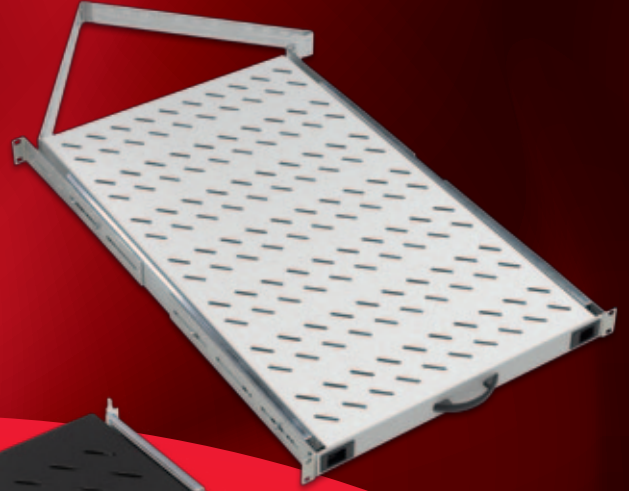
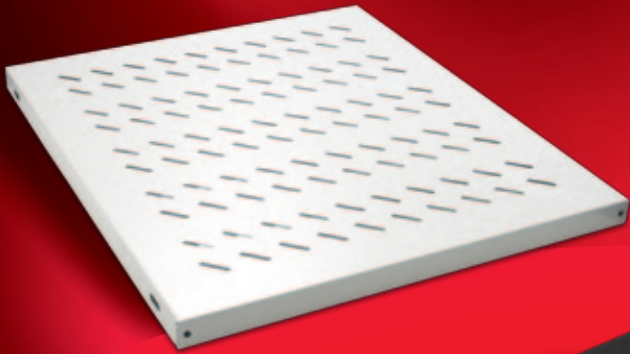


# ACCESSORIES



# ACCESSORIES

## ECONOMIC POWER STRIPES PVC HOUSING

## HORIZONTAL POWER STRIPES ALUMINIUM HOUSING



1U 19" 16A lighted on/off switched, Black Color, PVC Housing, Economic Segment Power Distribution Stripes, CE Marked.

ECONOMIC POWER STRIPES PVC HOUSING	Logistics Data						COMPATIBLE WITH																						
							DYNAmic Series Free Standing Cabinets W (Width) x D (Depth) mm		DYNAmix Series Free Standing Server Cabinets W (Width) x D (Depth) mm		NETBox Series Wall Mounting Cabinets W (Width) x D (Depth) mm		19" NETBox Series SOHO Cabinets W (Width) x D (Depth) mm		10" NETBox Series SOHO Cabinets W (Width) x D (Depth) mm		19" NETBox Home Series Cabinets W (Width) x D (Depth) mm		NETBox Slim Series Cabinets W (Width) x D (Depth) mm		DYNAmix Frame Systems W 530 x D (Depth) mm								
Part Number and Product Description	Product Dimensions mm	Pack Dimensions mm	Product Net Weight kg	Product Gross Weight kg	QTY in Box pcs	Box Dimensions mm	Box Gross Weight kg	600x600	600x800	600x1000	800x600	800x800	800x1000	600x1000	800x1000	600x450	600x600	600x450+150	540x300	540x400	312x300	600x150	600x300	522x480	Single Frame with 80mm depth	Double Frame System with 80mm depth	Double Frame System with 80mm depth	Double Frame System with 80mm depth	Single Frame with 160mm depth
<b>LN-PRZ-EKO-1U3P-SC</b> 3xDIN49440 Socket Schuko Power Stripe, 19" 1U, PVC Frame, 16A lighted on/off switch, 4000 Watt, 250V AC, 3x1.5mm <sup>2</sup> , 2,5m cable, DIN 49441 plug, CE mark.	482x44x44	500x100x120	0,6	0,7	16	545x425x400	14	●	●	●	●	●	●	●	●	●	●	●	●	●	●	●	●	●	●	●	●	●	●
<b>LN-PRZ-EKO-1U6P-SC</b> 6xDIN49440 Socket Schuko Power Stripe, 19" 1U, PVC Frame, 16A lighted on/off switch, 4000 Watt, 250V AC, 3x1.5mm <sup>2</sup> , 2,5m cable, DIN 49441 plug, CE mark.	482x44x44	500x100x120	0,8	0,9	16	545x425x400	17	●	●	●	●	●	●	●	●	●	●	●	●	●	●	●	●	●	●	●	●	●	●



Aluminium housing, different types and features, Power Distribution Stripes are CE Marked. DIN49440 Schuko types, IEC320 C13 Types, BS1363 UK Socket Types, lighted on/off switched, 16A cct Breaker type, Surge Protection types are available. Assembly types horizontal. A wide accessory portfolio is available, possible to configure special and specific product models with different socket types and qty's for projects.

HORIZONTAL POWER STRIPES ALUMINIUM HOUSING	Logistics Data						COMPATIBLE WITH																						
							DYNAmic Series Free Standing Cabinets W (Width) x D (Depth) mm		DYNAmix Series Free Standing Server Cabinets W (Width) x D (Depth) mm		NETBox Series Wall Mounting Cabinets W (Width) x D (Depth) mm		19" NETBox Series SOHO Cabinets W (Width) x D (Depth) mm		10" NETBox Series SOHO Cabinets W (Width) x D (Depth) mm		19" NETBox Home Series Cabinets W (Width) x D (Depth) mm		NETBox Slim Series Cabinets W (Width) x D (Depth) mm		DYNAmix Frame Systems W 530 x D (Depth) mm								
Part Number and Product Description	Product Dimensions mm	Pack Dimensions mm	Product Net Weight kg	Product Gross Weight kg	QTY in Box pcs	Box Dimensions mm	Box Gross Weight kg	600x600	600x800	600x1000	800x600	800x800	800x1000	600x1000	800x1000	600x450	600x600	600x450+150	540x300	540x400	312x300	600x150	600x300	522x480	Single Frame with 80mm depth	Double Frame System with 80mm depth	Double Frame System with 80mm depth	Double Frame System with 80mm depth	Single Frame with 160mm depth
<b>LN-PRZ-SGT-1U6P-SC</b> 6xDIN49440 Socket Schuko Power Stripe, 19" 1U, aluminium housing, 1x16A cct breaker, 4000 Watt, 250V AC, 3x1.5mm <sup>2</sup> , 2,5m cable, DIN 49441 plug, CE mark.	482x44x44	500x50x120	1	1,1	27	545x425x400	31	●	●	●	●	●	●	●	●	●	●	●	●	●	●	●	●	●	●	●	●	●	●
<b>LN-PRZ-SGT-2U9P-SC</b> 9xDIN49440 Socket Power Stripe, 19" 2U aluminium housing, 1x16A cct breaker, 4000 Watt, 250V AC, 2,5m cable, DIN 49441 plug, CE mark.	482x44x88	500x100x120	1,5	1,7	12	545x425x400	22	●	●	●	●	●	●	●	●	●	●	●	●	●	●	●	●	●	●	●	●	●	●
<b>LN-PRZ-AKK-1U6P-SC</b> 6xDIN49440 Socket Schuko Surge Protection power Stripe, 19" 1U, aluminium housing, 16A lighted on/off switched, 4000 Watt, 250V AC, 3x1.5mm <sup>2</sup> , 2,5m cable, DIN 49441 plug, CE mark.	482x44x44	500x50x120	1	1,1	27	545x425x400	31	●	●	●	●	●	●	●	●	●	●	●	●	●	●	●	●	●	●	●	●	●	●
<b>LN-PRZ-ONF-1U6P-UK</b> 6xBS1363 UK Socket Power Stripe, 19" 1,5U, aluminium housing, 16A lighted on/off switched, 4000 Watt, 250V AC, 3x1.5mm <sup>2</sup> , 2,5m cable, 13A BS1363 plug, CE mark.	482x44x62	500x100x120	1,2	1,4	24	545x425x400	34	●	●	●	●	●	●	●	●	●	●	●	●	●	●	●	●	●	●	●	●	●	●
<b>LN-PRZ-SGT-1U6P-IE</b> 6xIEC 320 C13 Socket Power Stripe, 19" aluminium housing, 1x16A cct breaker, 4000 Watt, 250V AC, 2,5m cable, DIN 49441 plug, CE mark.	482x44x44	500x50x120	1	1,1	27	545x425x400	31	●	●	●	●	●	●	●	●	●	●	●	●	●	●	●	●	●	●	●	●	●	●
<b>LN-PRZ-ONF-1U8P-SC</b> 8xDIN49440 Socket Schuko Power Stripe, 19" 1U, aluminium housing, 16A lighted on/off switched, 4000 Watt, 250V AC, 3x1.5mm <sup>2</sup> , 2,5m cable, DIN 49441 plug, CE mark.	482x44x44	500x50x120	1,1	1,2	27	545x425x400	34	●	●	●	●	●	●	●	●	●	●	●	●	●	●	●	●	●	●	●	●	●	●





Monitored and Managed Professional PDU segment, with optional sensors environmental monitoring is applicable. A very wide product portfolio in Horizontal and vertical assembly types and socket qty's and types. Specific products can be configured based on request of different sockets and types.

PROFESSIONAL PDU SEGMENT	Logistics Data							COMPATIBLE WITH																						
								DYNAmic Series Free Standing Cabinets W (Width) x D (Depth) mm		DYNAmix Series Free Standing Server Cabinets W (Width) x D (Depth) mm		NETbox Series Wall Mounting Cabinets W (Width) x D (Depth) mm		19" NETbox Series SOHO Cabinets W (Width) x D (Depth) mm		19" NETbox Home Series Cabinets W (Width) x D (Depth) mm		NETbox Slim Series Cabinets W (Width) x D (Depth) mm		DYNAmic Frame Systems W 530 x D (Depth) mm										
Part Number and Product Description	Product Dimensions mm	Pack Dimensions mm	Product Net Weight kg	Product Gross Weight kg	QTY in Box pcs	Box Dimensions mm	Box Gross Weight kg	600x600	600x800	600x1000	800x600	800x800	800x1000	600x1000	800x1000	600x450	600x600	600x450+150	540x300	540x400	312x300	600x150	600x300	522x480	Single Frame with 80mm depth Frame	Double Frame System with 80mm depth Frame D:670mm	Double Frame System with 80mm depth Frame D:870mm	Double Frame System with 80mm depth Frame D:1070mm	Single Frame with 160mm depth Frame	
<b>LN-PRZ-AMP-1U6P-IE</b> 6x IEC 320 C13 Socket PDU with Ampermeter Display, 19" 1U, aluminium profile frame, 1x16A MCB, 4000 Watt, 250V AC, 3x2.5mm <sup>2</sup> , 3m cord with IEC60309 plug (16A 2P+E), CE mark	482x44x44	540x140x65	1,4	1,7	10	560x305x350	18	●	●	●	●	●	●	●	●										●	●	●	●	●	
<b>LN-PRZ-AMP-DM24-IE</b> 24x IEC 320 (20xC13 + 4xC19) Socket PDU with Ampermeter Display, ZeroU, aluminium profile frame, 2x16A MCB, 8000 Watt, 250V AC, 3x6.0mm <sup>2</sup> , 3m cord with IEC60309 plug (32A 2P+E), CE mark	482x62x1648	1700x105x75	4,2	5	6	1860x250x270	32							42U/45U	42U/45U															



Monitored and Managed Professional PDU segment, with optional sensors environmental monitoring is applicable. A very wide product portfolio in Horizontal and vertical assembly types and socket qty's and types. Specific products can be configured based on request of different sockets and types.

PROFESSIONAL PDU SEGMENT	Logistics Data							COMPATIBLE WITH																						
								DYNAmic Series Free Standing Cabinets W (Width) x D (Depth) mm		DYNAmix Series Free Standing Server Cabinets W (Width) x D (Depth) mm		NETbox Series Wall Mounting Cabinets W (Width) x D (Depth) mm		19" NETbox Series SOHO Cabinets W (Width) x D (Depth) mm		19" NETbox Home Series Cabinets W (Width) x D (Depth) mm		NETbox Slim Series Cabinets W (Width) x D (Depth) mm		DYNAmic Frame Systems W 530 x D (Depth) mm										
Part Number and Product Description	Product Dimensions mm	Pack Dimensions mm	Product Net Weight kg	Product Gross Weight kg	QTY in Box pcs	Box Dimensions mm	Box Gross Weight kg	600x600	600x800	600x1000	800x600	800x800	800x1000	600x1000	800x1000	600x450	600x600	600x450+150	540x300	540x400	312x300	600x150	600x300	522x480	Single Frame with 80mm depth Frame	Double Frame System with 80mm depth Frame D:670mm	Double Frame System with 80mm depth Frame D:870mm	Double Frame System with 80mm depth Frame D:1070mm	Single Frame with 160mm depth Frame	
<b>LN-PRZ-IZP-DM20-IE</b> 20x IEC 320 (16xC13 + 4xC19) Socket, MONITORED IP PDU with Ampermeter Display, ZeroU, aluminium profile frame, 1x32A MCB, 8000 Watt, 250V AC, 3x6.0mm <sup>2</sup> , 3m cord with IEC60309 plug (32A 2P+E), CE mark, daisy-chain function upto 10 units, Remote Monitoring port	44x66x1354	1500x186x160	4,5	5	4	1680x430x345	22							42U/45U	42U/45U															
<b>LN-PRZ-YNP-DM20-IE</b> 20x IEC 320 (16xC13 + 4xC19) Socket, Socket Based MANAGED IP PDU with Ampermeter Display, ZeroU, aluminium profile frame, 1x32A MCB, 8000 Watt, 250V AC, 3x6.0mm <sup>2</sup> , 3m cord with IEC60309 plug (32A 2P+E), CE mark, daisy-chain function upto 10 units, Remote Monitoring port	44x66x1826	2000x186x160	4,5	5	4	2100x430x345	22							42U/45U	42U/45U															