

Operating With Imou App

Step 1

Scan the following QR code or search “Imou” in Google Play or App Store to download and install Imou App.



Step 2

Run Imou App, and then register an account for first use.

Step 3

Connect the camera to power source with the power adapter.

Step 4

Wait for booting to be finished, and then the camera indicator flashes with green light.

Step 5

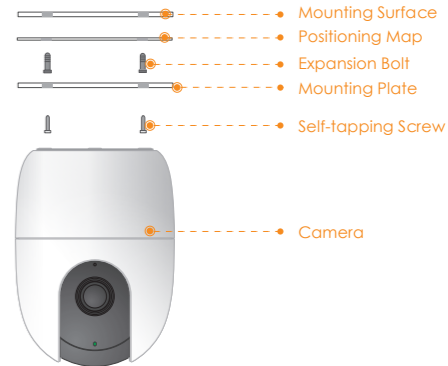
Connect your smart phone to your Wi-Fi network, and make sure your smartphone is connected to Wi-Fi network with 2.4 GHz band, and then do the following operations to finish adding camera.



- Note:**
- If you have more than one camera, do step 5 to add them one by one.
 - If the Wi-Fi network changed or the indicator status goes wrong, reset the camera, and then do step 5 to add it again.

Installing Camera

Note: Make sure the mounting surface is strong enough to hold at least three times of the device weight.



- Step1** Drill screw holes on the mounting surface as the mounting map shows, and then put in the expansion bolts.
- Step2** Attach the mounting plate to the mounting surface with the self-tapping screws.
- Step3** Attach the camera to the mounting plate, then power it up, and then, adjust the lens to the ideal angle.

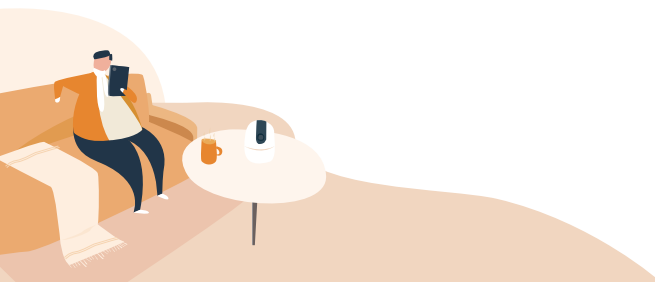
About the Guide

- This quick start guide is for reference only. Minor difference might be found in user interface.
- All the design and software here are subject to change without prior written notice.
- All trademarks and registered trademarks mentioned are the properties of their respective owners.
- Please visit our website or contact your local service engineer for more information.
- If there is any uncertainty or controversy, please refer to our final explanation.



Quick Start Guide

Version 1.0.0



Packing List



Camera x 1



Power Adapter x 1



Power Cable x 1



QSG x 1



Screw Package x 1



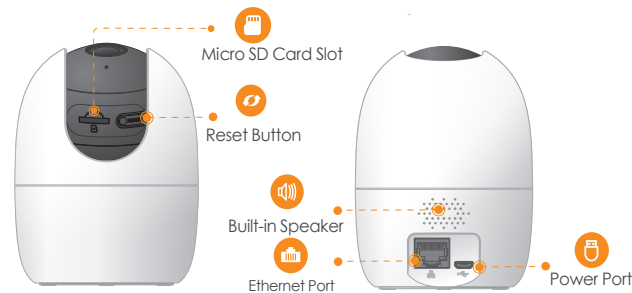
Mounting Plate x 1



Positioning Map x 1

Camera Introduction

- LED Indicator
- Lens
- Built-in Mic



Note: Press and hold the reset button for 10 s to reset the camera.

The pattern of the LED indicator is included in the following table.

LED Indicator Status	Device Status
Off	<ul style="list-style-type: none">Powered off/LED turned offRebooting after reset
Red light on	<ul style="list-style-type: none">BootingDevice malfunction
Green light flashing	Waiting for network
Green light on	Operating properly
Red light flashing	Network connection failed
Green and Red light flashing alternately	Firmware updating