

Outdoor Security Wi-Fi Camera

Model: Tapo C325WB



ColorPro Night Vision



2K QHD Crystal Clear View



Person/Animal/Vehicle Detection*



IP66 Water & Dust Resistant



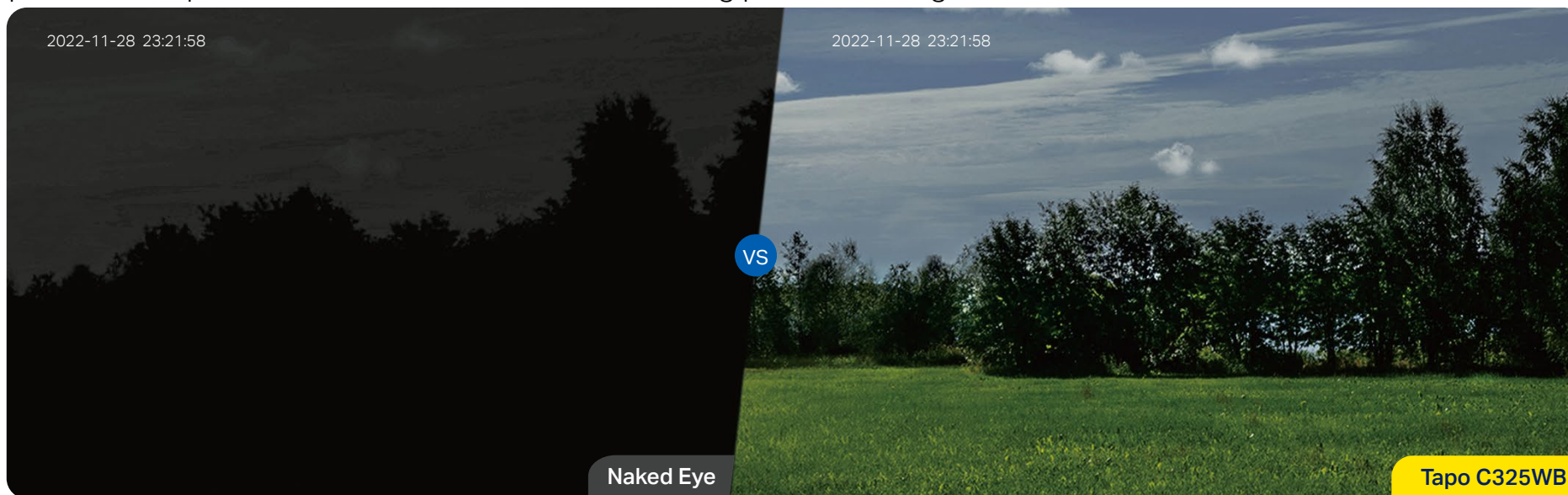
Local microSD Storage (Up to 512 GB)*



// Highlight

ColorPro Night Vision

As Pro series products, Tapo C325WB offers more significant night vision performance than traditional color night vision cameras, capturing vivid colors under ultra low-light conditions even without any spotlights, Enjoy its professional protection with clearer view even during pitch-black nights.

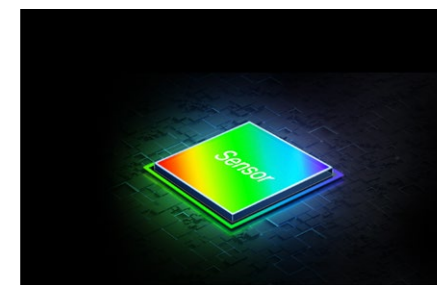
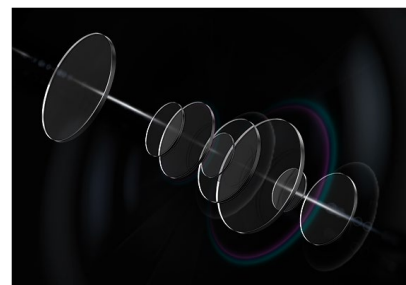


F1.0 Super-Aperture Lens

Allows 4 × more light^Δ to pass through the camera lens, making it ideal for ultra low-light conditions.

1/1.79" Large Sensor

Maximizes the utilization of perceived light with larger target surface and higher sensitivity to render more colors.



^ΔCompared with cameras with F2.0 lens.

// Highlight

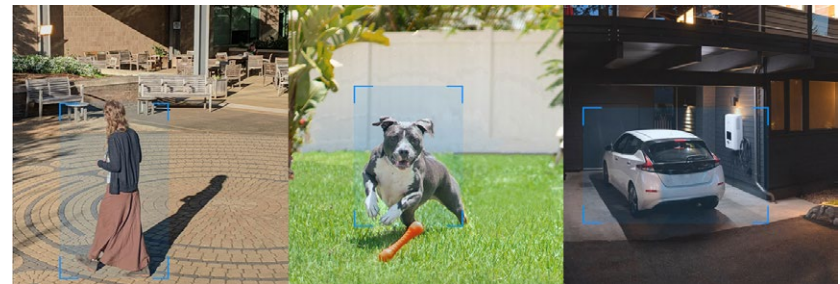
2K QHD Crystal Clear View

With a resolution of 2688 × 1520, Tapo C325WB reveals highly-detailed images.



Person/Animal/Vehicle Detection*

Smart AI identifies vehicles, people, and even animals, notifying you as needed*.



// Features



Customizable Motion Detection

Set up activity zones or boundaries and receive instant notifications when motion is detected in your customized zones.



IP66 Weatherproof

Helps Tapo C325WB perform well even in harsh environments with rain and dust.



Wired/Wireless Networking

Connect the camera to your network through Ethernet or Wi-Fi for more flexible installation.



Wide Field of View

A wide FOV provides a larger detection range covering more space, enabling you to focus on more vital areas.



Local & Cloud Storage

Save recorded videos to a microSD card (up to 512 GB)[†] or use Tapo Care^{**} cloud storage service.



Two-Way Audio

Enables communication through a built-in microphone and speaker.

[†]microSD card needs to be purchased separately.

^{**}Subscribe for cloud storage at <http://www.tapo.com/tapocare/>

* Tapo C325WB's animal detection currently supports cats and dogs. More types of animals will be supported in the future.

For more information, please visit <https://www.tapo.com/>

All brands and product names are trademarks or registered trademarks of their respective holders. Specifications are subject to change without notice. ©2024 TP-Link

// Specifications

Camera	Image Sensor	1/1.79" Progressive Scan CMOS Starlight Sensor
	Lens	Focal Length: 4.58 mm Aperture: F1.0 Field of View: 131° (Diagonal), 106° (Horizontal), 56° (Vertical)
	Night Vision	Full-Color Night Vision
	Day/Night Switch	/
	Lighting	2× Built-in Spotlights
	Interface & Button	1× Ethernet Port 1× RESET Button 1× microSD Card Slot (Up to 512 GB)
	Hub Compatibility	/
Video & Audio	Maximum Resolution	2688 × 1520 px
	Frame Rate	20 fps
	Digital Zoom	12.67x
	Video Compression	H.264
	Live View	Yes

Video & Audio	Image Enhancement	3DNR WDR HDR
	Audio Input & Output	Built-in Microphone and Speaker
	Audio Communication	Two-Way Audio with Noise Cancellation
	Siren Volume	97 dB (Level measured at 4-inch/10-cm distance)
Storage	Local Storage	microSD Card Slot on Camera (Up to 512 GB)
	Cloud Storage	Tapo Care Cloud Storage Services (Subscription required)
Detection & Notification	Sensor	/
	AI Detection	Motion Detection Person Detection Pet Detection Vehicle Detection Line-Crossing Detection Camera Tampering
	Activity Zones	Yes *Only works with Motion Detection.
	Output Notification	System Notification System Notification with Snapshot (Tapo Care Services)
Network	Network Connectivity	Connect via Wi-Fi or Ethernet
	Wireless Connectivity	IEEE 802.11b/g/n, 2.4 GHz Wi-Fi

Network	Transmission Rate	11b: 11 Mbps 11g: 54 Mbps 11n: 144.4 Mbps
	Protocol	TCP/IP, DHCP, ICMP, DNS, NTP, HTTPS, TCP, UDP
	Max. Distance Between Hub and Camera/Doorbell	/
	Ethernet Port	1× 10/100 Mbps RJ45 Port on Camera
	RTSP	Yes
	ONVIF	Yes
Security	Security	On-Device Machine Learning 128-bit AES Encryption with SSL/TLS WPA/WPA2-PSK/WPA3
Power	Power Source	9 V DC Power Adapter
	Input Voltage	100-240 V, 50/60 Hz
	Output Voltage	9 V, 0.6 A (DC Power)
	DC Power Connector Size	Inside Ø: 2.1 mm Outside Ø: 5.5 mm
	Power Cord Length	3 m
	Typical Power Consumption	2.7 W
	Maximum Power Consumption	4.5 W

General	Certifications	CE, FCC, RoHS, RCM
	Smart Integration	Google Assistant, Amazon Alexa
	Weather Resistance	IP66
	System Requirements	Tapo App: iOS 9.0 or higher, Andriod 4.4 or higher
	Mounting Options	Wall-Mounted
	Operating Temperature	-20 °C ~ 45 °C (-4°F ~ 113 °F)
	Storage Temperature	-20 °C ~ 70 °C (-4 °F ~ 158 °F)
	Operating Humidity	10% ~ 90% RH, Non-condensing
	Storage Humidity	0 ~ 90% RH, Non-condensing
	Charging Temperature	\
	Mounting Screw Size	<p>Philips Depth: 0.86-1.43mm</p>
	SD Card Slot Cover Screw Size	
Dimensions	5.85 × 4.09 × 2.78 in (148.7 × 104 × 70.6mm)	

General	Weight	8.11 oz / 230 g
	Package Contents	Tapo C325WB Camera Power Adapter Mounting Anchors Mounting Screws Mounting Template Waterproof Seal Waterproof Cable Attachments Quick Start Guide